
WEEKLY UPDATE WITH PHOTOS For week commencing 2nd December 2024

- Mains power has now been connected to the sub-station by UKPS and power is now connected to the building. Heat pumps have also been fired up and heating is progressing up the building.
- Kerbs have been installed to main carpark with remedial tarmac completed. Block paving installed to the first and second parking area, with the kerb line being constructed to the new site entrance. The final tarmac remedial works are now complete and block paving to foot paths and door entrances are in progress. The new site entrance has been formed.
- Flooring is complete from the First to Eighth floor and carpets have also now been fitted, carpets to the staircases are starting to the first and second floors this week.
- Decoration is complete from First to Eighth floor, and now completed up to level four to the corridors.
- The plant room works are complete and the air source heat pumps have been connected and powered up and in operation.
- The balcony balustrades are complete from Seventh down to First floor with foundations to the ground floor railings being installed.
- Carpentry second fix is complete from the First to Eighth floor with Finals complete to the corridors nearing completion.
- Kitchen installation is complete.
- Tiling to kitchens and bathrooms is complete.
- The car park block paving to Zone 2 is complete and white lining is also completed with hedging and trees being installed.
- The balcony soffits have been installed from the Seventh down to the Ground floor.



Tony Johnson
Senior Site Manager

Contact our Social Value and Community Team

☎ 0800 032 6760 (free phone) 8am to 8pm, seven days a week

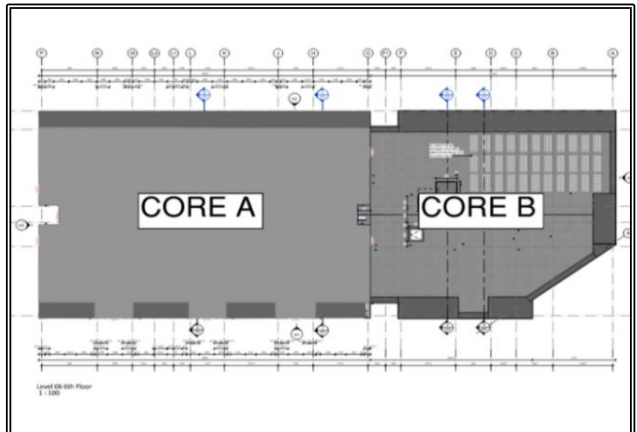
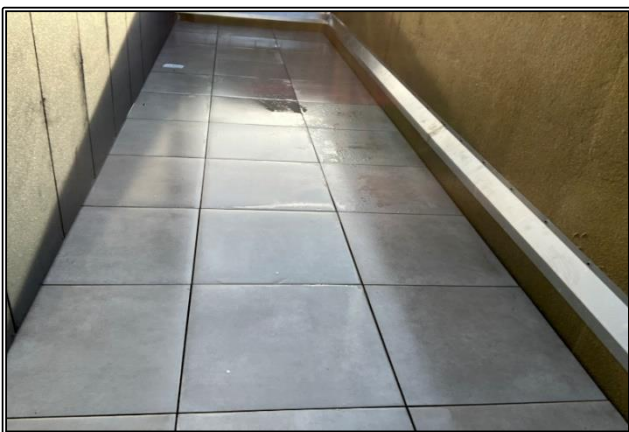
✉ residents@hill.co.uk

✍ The Powder House
Gunpowder Mill
Powdermill Lane
Waltham Abbey
Essex, EN9 1BN



Thamesview House Bulletin 29th November 2024

- The rainwater pipes have been installed and are being connected to the Ground floor outlets.
- The balcony tiling is complete with the exception of the Eighth floor that is in progress.
- The drainage connection on Thamesmead recreation ground has been complete and signed off by Thames water and the hoarding has been removed and replaced Herring fencing to allow paving works to progress.
- First fix drylining 1st fix & ventilation is now complete in the Nursery with 2nd fix drylining in progress.
- The site will be open on Saturday 29/11/2024.



Tony Johnson
Senior Site Manager

Contact our Social Value and Community Team

☎ 0800 032 6760 (free phone) 8am to 8pm, seven days a week

✉ residents@hill.co.uk

✍ The Powder House
Gunpowder Mill
Powdermill Lane
Waltham Abbey
Essex, EN9 1BN

